

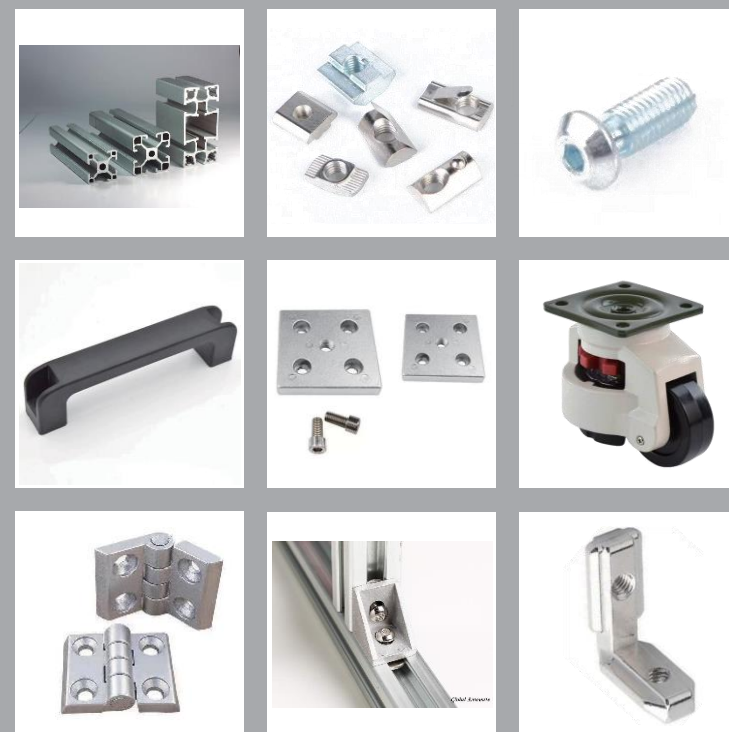


# GLOBAL AUTOMATE SOLUTIONS

Increase Your Shop Floor Efficiency With Us!!!

Global Automate Solutions is a Professional Manufacturer of T Slot Aluminum Profiles & Accessories and Non-standard fasteners. The company is located in Pune city Maharashtra –India

The company firmly set up the concept of “quality first, credibility foremost”! Relying on the scientific management method, the company optimizes the supply chain, improves and explores new processing technics, brings in advanced processing equipment, and reduces production cost without compromising the quality of products to really benefit our customers.



**T SLOT  
ALUMINIUM  
PROFILE &  
ACCESSORIES**

## Contact Us –

**Global Automate Solutions**  
95/1 Near Swami Samarth temple landgenagar Bhosari Pune 411039  
Tel - +917972221755 / 9730382785/ 9850763285  
Mail – salesglobalautomate@gmail.com  
website - www.globalautomate.in

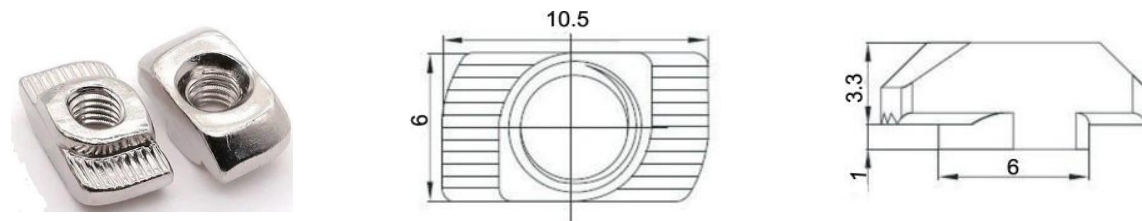
# Fastening Elements

Material: Carbon Steel  
Surface treatment :Zinc /Nickel Plated

# 20 Series Fastening Elements

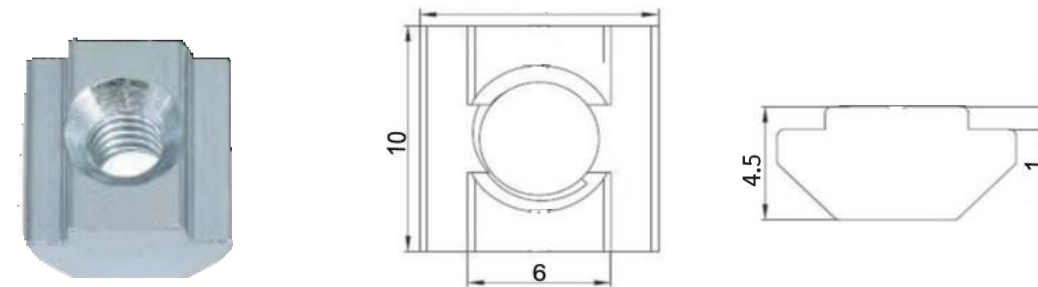
Suitable For 20x20,20x40,20x60,20x80 etc 6 mm slot size T/V Slot Aluminium Profiles

## GA20 Hammer Nuts



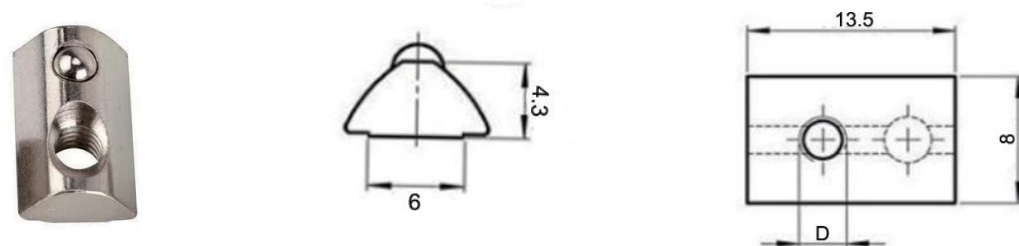
Description	Dia	Mass/g	Part No
6-M3	M3	1.5	20H603
6-M4	M4	1.3	20H604
6-M5	M5	1	20H605

## GA20 Sliding T Nuts



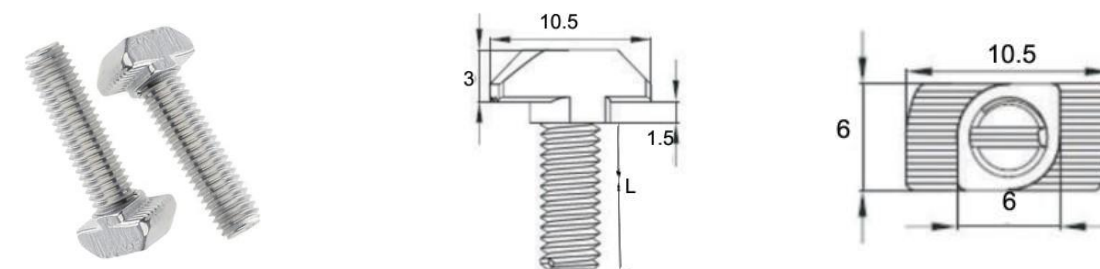
Description	Dia	Mass/g	Part No
6-M3	M3	1.5	20S603
6-M4	M4	1.3	20S604
6-M5	M5	1	20S605

## GA20 Sliding Ball T Nuts



Description	Dia	Mass/g	Part No
6-M4	M4	2.2	20SB604
6-M5	M5	2	20SB605
6-M6	M6	1.6	20SB606

## GA20 T Bolts



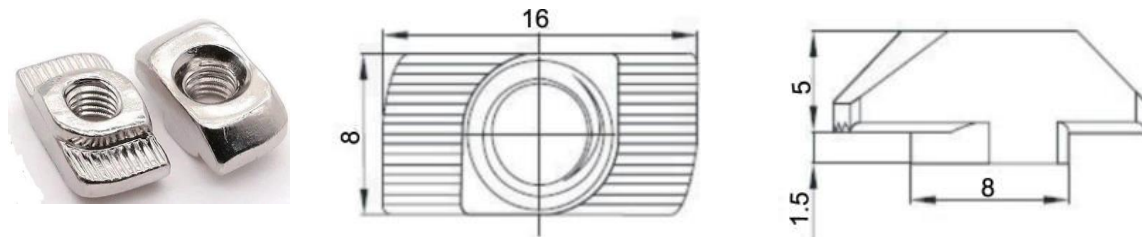
Description	L	Mass/g	Part No
M5X10	10	2.9	20B510
M5X20	20	3.4	20B520
M5X16	16	3.9	20B516

## Fastening Elements

Material: Carbon Steel  
Surface treatment :Zinc /Nickel Plated

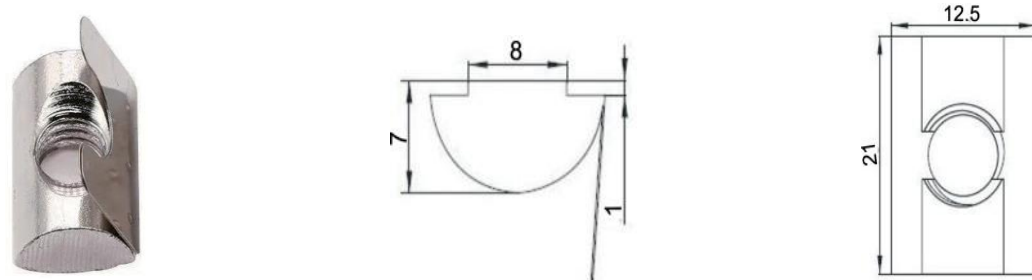
Suitable For 30X30,30X60,60X60, 30R etc 8 mm / 10 mm slot size T Slot Aluminium Profiles

### GA30 Hammer Nuts



Description	Dia	Mass/g	Part No
8-M4	M4	3.6	30H804
8-M5	M5	3.5	30H805
8-M6	M6	3.2	30H806

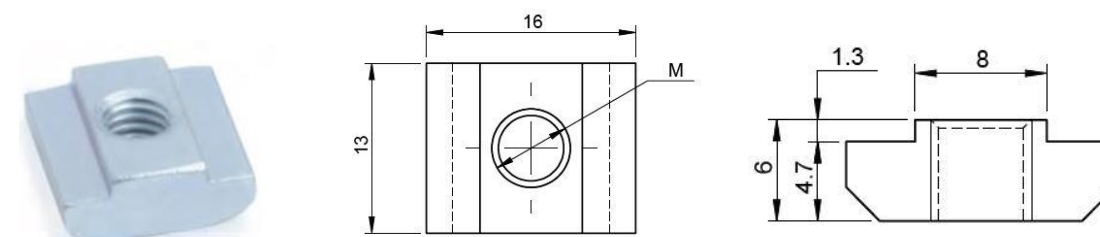
### GA30 Sliding Spring T Nuts



Description	Dia	Mass/g	Part No
8-M5	M5	8.3	30SS805
8-M6	M6	7.6	30SS806
8-M8	M8	7.2	30SS808

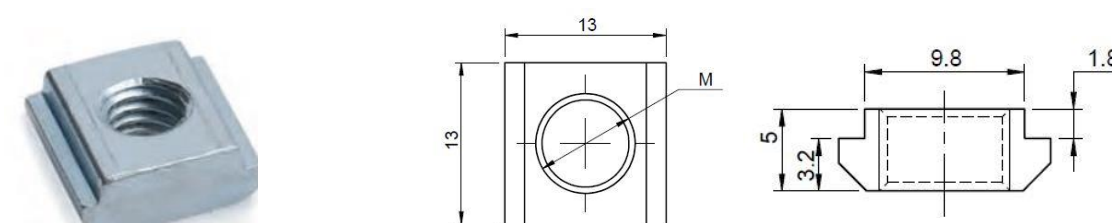
## 30 Series Fastening Elements

### GA30 Sliding T Nuts (Slot 8)



Description	Dia	Mass/g	Part No
8-M4	M4	8.5	30S804
8-M5	M5	8.3	30S805
8-M6	M6	7.8	30S806
8-M8	M8	6.7	30S808

### GA30 Sliding T Nuts (Slot 10)



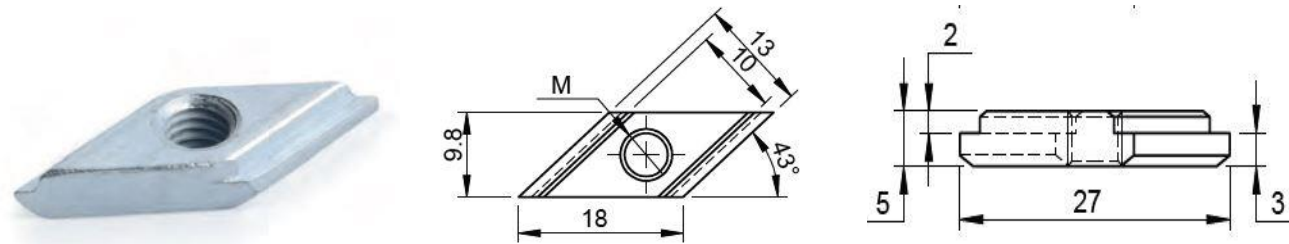
Description	Dia	Mass/g	Part No
10-M4	M4	8	30S1004
10-M5	M5	7.9	30S1005
10-M6	M6	7.2	30S1006
10-M8	M8	6.7	30S1008

## Fastening Elements

Material: Carbon Steel  
Surface treatment :Zinc /Nickel Plated

Suitable For 30X30,30X60,60X60, 30R etc 8 mm / 10 mm slot size T Slot Aluminium Profiles

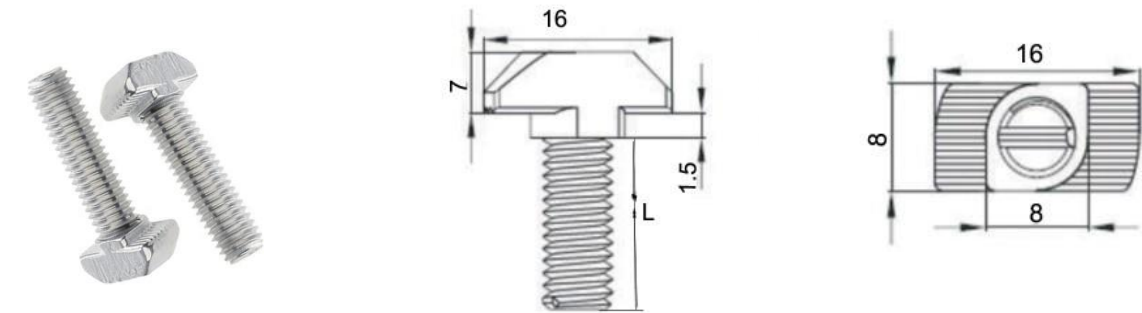
### GA30 Diamond T Nuts 10 mm



Description	Dia	Mass/g	Part No
10-M4	M4	3.6	30D1004
10-M5	M5	3.5	30D1005
10-M6	M6	3.2	30D1006

## 30 Series Fastening Elements

### GA30 T Bolts



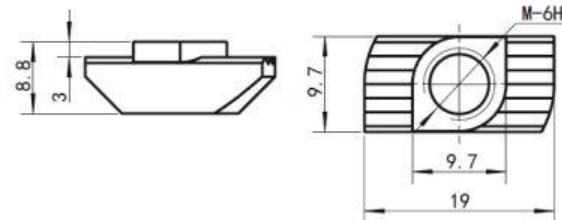
Description	Dia	Mass/g	Part No
M6X20 -30	M6	10.7	30TB0820

## Fastening Elements

Material: Carbon Steel  
Surface treatment :Zinc /Nickel Plated

Suitable For 40x40, 45x45, 40x80, 45x90, 40x120, 40x160, 80x80, 90x90 etc 10 mm slot size T/V Slot Aluminium Profiles

### GA40 Hammer Nuts



Description	Dia	Mass/g	Part No
10-M4	M4	8.3	40H104
10-M5	M5	7.8	40H105
10-M6	M6	7.3	40H106
10-M8	M8	7.1	40H108

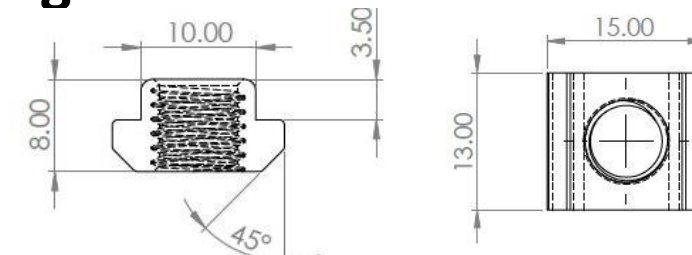
### GA40 Sliding Spring T Nuts



Description	Dia	Mass/g	Part No
10-M4	M4	11.8	40SS104
10-M5	M5	11.2	40SS105
10-M6	M6	10.8	40SS106
10-M8	M8	10.2	40SS108

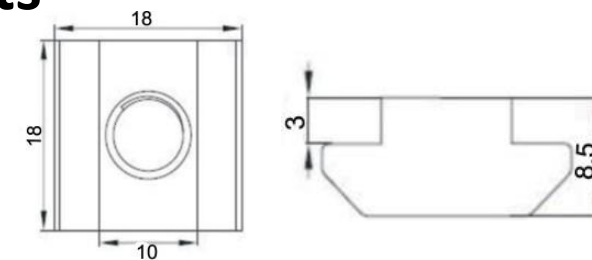
## 40 Series Fastening Elements

### GA40 Sliding T Nuts



Description	Dia	Mass/g	Part No
10-M4	M4	6.25	40S804
10-M5	M5	6.5	40S805
10-M6	M6	6.8	40S806
10-M8	M8	7.1	40S808

### GA80 Sliding T Nuts



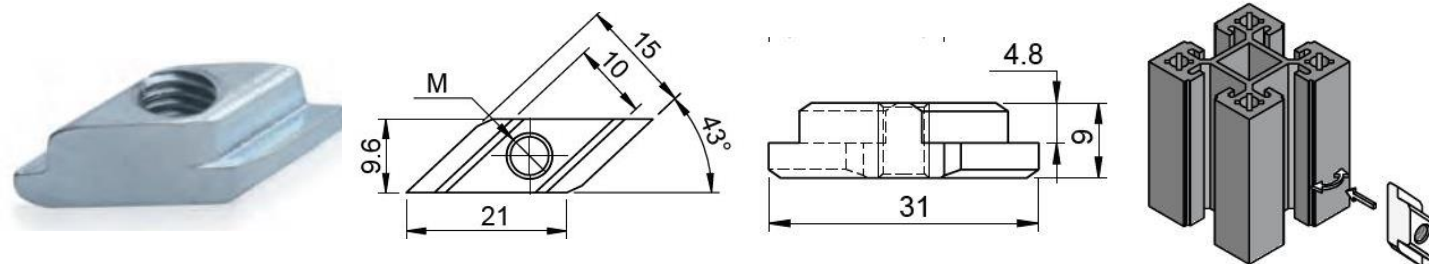
Description	Dia	Mass/g	Part No
10-M4	M4	21.5	80S804
10-M5	M5	2.6	80S805
10-M6	M6	20	80S806
10-M8	M8	18.4	80S808

## Fastening Elements

Material: Carbon Steel  
Surface treatment :Zinc /Nickel Plated

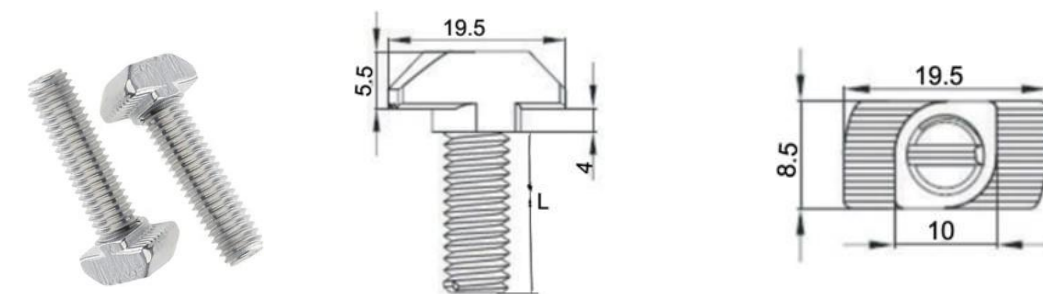
Suitable For 40x40, 45x45, 40x80, 45x90, 40x120, 40x160, 80x80, 90x90 etc 10 mm slot size T/V Slot Aluminium Profiles

### GA40 Diamond T Nuts



Description	Dia	Mass/g	Part No
10-M4	M4	8.3	40D104
10-M5	M5	7.8	40D105
10-M6	M6	7.3	40D106
10-M8	M8	7.1	40D108

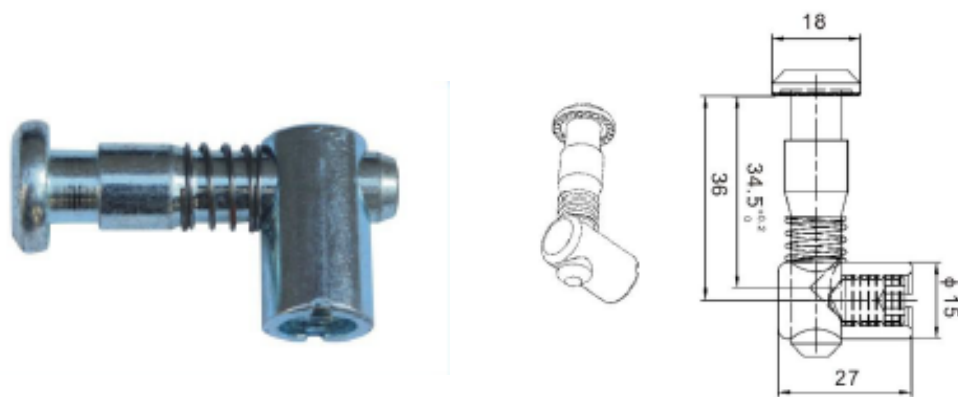
### GA40 T Bolts



Description	Dia	Mass/g	Part No
M8X20	M8	11.7	40TB0820
M8X25	M8	14.6	40TB0825
M8X30	M8	16	40TB0830
M8X35	M8	17.5	40TB0835
M8X40	M8	19	40TB0840

### GA40 Quick Connectors

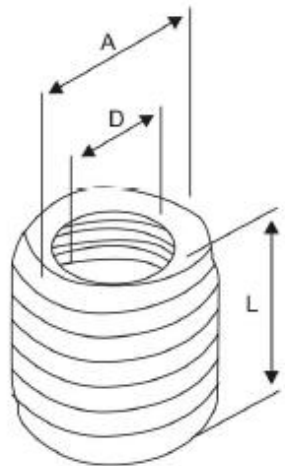
### GA40QC90



## Fastening Elements

Material: Carbon Steel  
Surface treatment :Zinc /Nickel Plated

### Inserts



A	D	L	Mass (g)	Part No
M10	M6	16	4.1	M10M6.GA
M12	M6	16	4.4	M12M6.GA
M12	M8	16	4.9	M12M8.GA
M12	M6	20	8.1	M12M6.GA
M12	M8	20	6.9	M12M8.GA
M14	M6	20	14.9	M14M6.GA
M14	M8	20	12.2	M14M8.GA